



**USAID**  
FROM THE AMERICAN PEOPLE



# **EIA and “USAID Environmental Procedures”: the Initial Environmental Examination (IEE) and Beyond**

GEMS Environmental Compliance-ESDM Training Series  
Rwanda ▪ March, 2015



# Session Objectives:

- Review background and principles of Environmental Impact Assessment (EIA)
- Review EIA process and fundamental skills:
  - *Baseline characterization*
  - *Identifying impacts of concern*
  - *Developing a mitigation strategy*
- Explain USAID implementation of the EIA process
- Understand preparation of USAID environmental compliance documentation

# USAID Environmental Procedures

- **Specifies an Agency-wide approach to environmental management of USAID-funded activities.**
- **“Environmental Procedures” Encompass:**
  - *22 CFR 216 (“Reg. 216”)*
  - *Foreign Assistance Act (FAA) Sections 117, 118 & 119.*
  - *USAID-internal Automated Directives System (ADS)*
  - *Regional Best Practices*

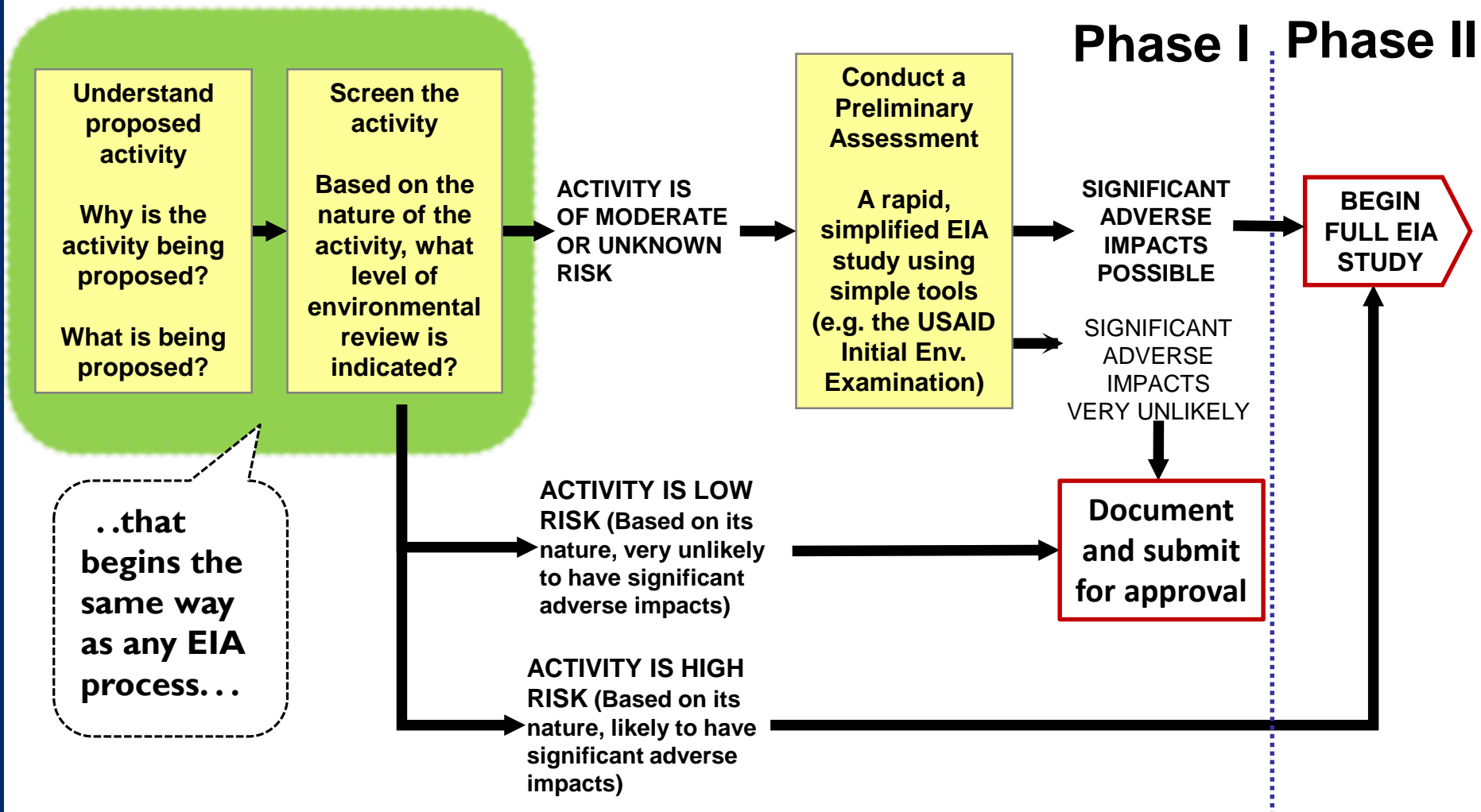
**!** “USAID Environmental Procedures” refers generally to all relevant laws, Agency guidance, and prevailing best practices.

# Applying the EIA process

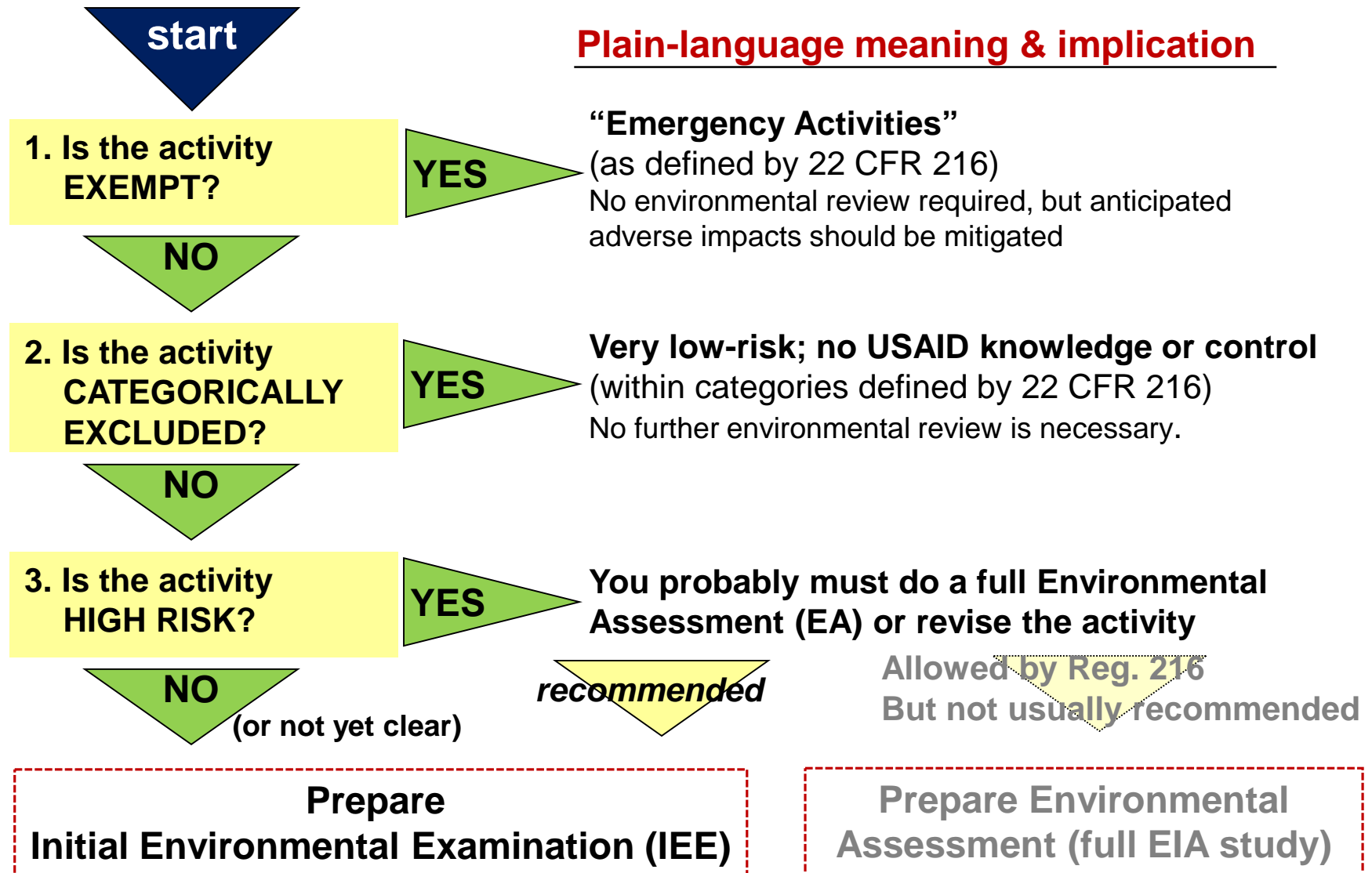
- The USAID approach to EIA is established in Reg. 216
- Reg. 216 defines a pre-implementation EIA process
- This process applies to:
  - *All USAID programs or activities, (including non-project assistance.)*
  - *New activities*
  - *Substantive amendments or extensions to ongoing activities*

**!** Reg. 216 (22 CFR 216) is a US FEDERAL REGULATION. Compliance is mandatory.

# Reg. 216 = USAID's implementation of general EIA process...

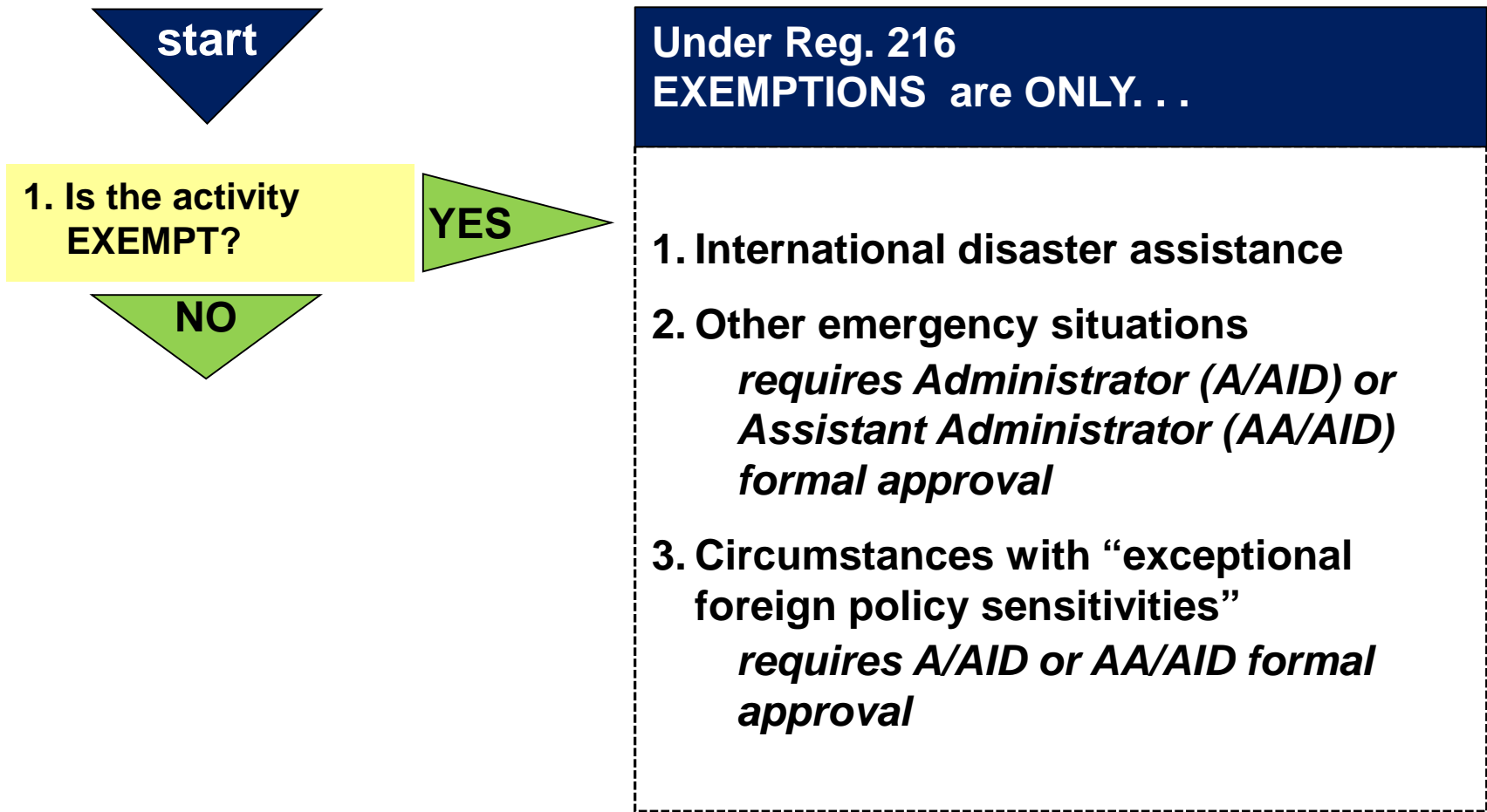


# The USAID screening process



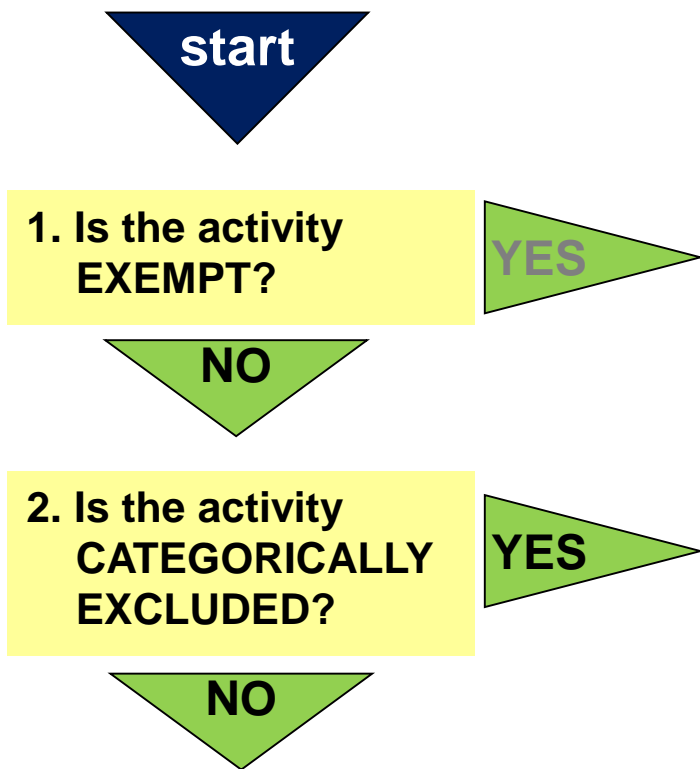
# Screening under 22 CFR 216: Exemptions

! “Exempt” activities often have significant adverse impacts.  
Mitigate these impacts where possible.





# Screening under 22 CFR 216: Categorical Exclusions

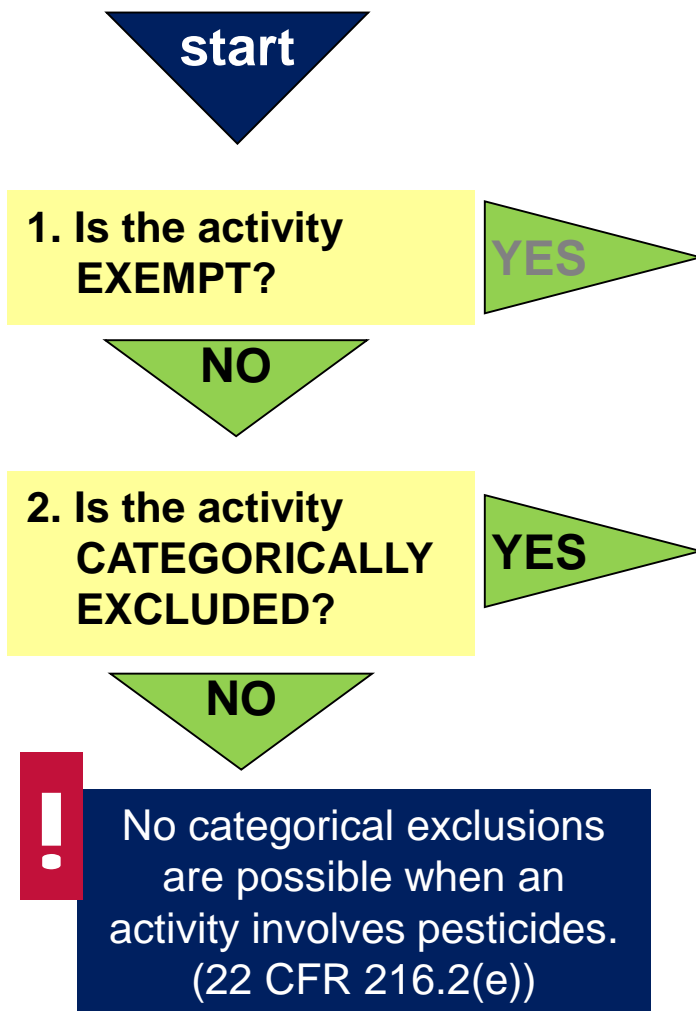


**ONLY** activities fitting in a set of 15 specific categories MAY qualify for categorical exclusions, including. . .

- Education, technical assistance, or training programs (as long as no activities directly affect the environment)
- Documents or information transfers
- Analyses, studies, academic or research workshops and meetings
- Nutrition, health, family planning activities **except where medical waste is generated**



# Categorical Exclusions: LIMITATIONS



An activity may “fit” into a categorically excluded class. . .

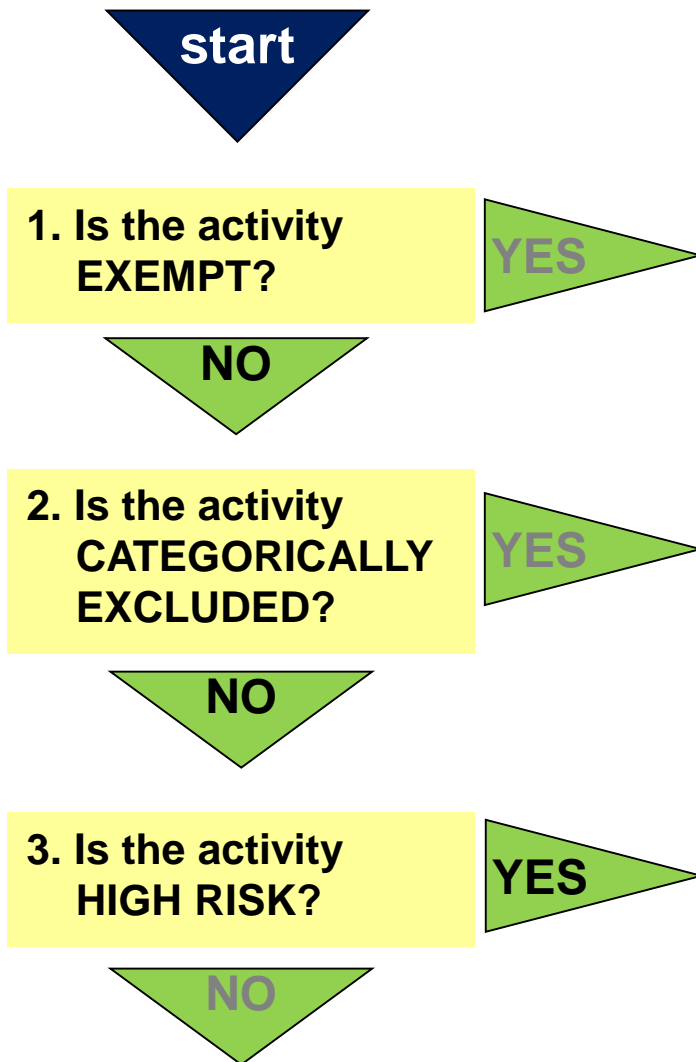
. . . but if adverse impacts are reasonably foreseeable, the activity will NOT receive a categorical exclusion.

Why would categorical exclusions NOT apply if USAID funds. . .

- A technical advisor to the ministry of environment and energy with co-signature authority over mining concession awards?
- Midwife training in management of 3<sup>rd</sup>-stage labor?
- Credit support to large-scale agro-processing?



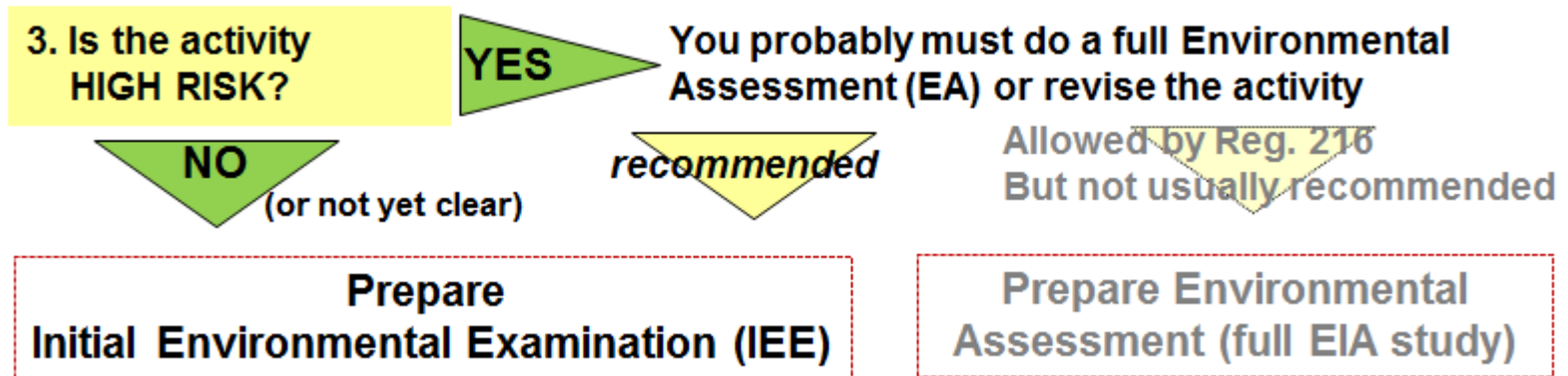
# “High Risk” (EA Likely Required)



**“HIGH RISK” = activities “for which an EA is normally required” per 22 CFR 216 OR other activities which clearly present high environmental risks**

- Penetration road building or improvement
- Irrigation, water management, or drainage projects
- Agricultural land leveling
- New land development; programs of river basin development
- Large scale agricultural mechanization
- Resettlement
- Powerplants & industrial plants
- Potable water & sewage, “except small-scale”

# What if my activity is “high risk”?



Can proceed directly to an EA (USAID’s full EIA study)

But unless the activity is VERY clearly “high risk”, do an IEE (USAID’s preliminary assessment) instead

## WHY a preliminary assessment?

An IEE will:

- Allow you to determine if impacts can be easily controlled below a significant level—if so, an EA is not necessary
- Gather information needed to jump-start the EA process

# What is clearly “high risk”?

<b>EA DEFINITELY REQUIRED</b>	<b>NOT CLEAR—proceed to IEE</b>
New 500Ha irrigation scheme	Rehabilitation of 50Ha irrigation scheme
Major expansion of a 100MW thermal power plant & construction of new transmission lines	Mini-hydro installations of 500 kw total
Widening 30km of a 2-lane road to 6-lane tollway thru an urban area	Rehabilitation of multiple short segments of rural feeder road

## **Sections 118 & 119 of the Foreign Assistance Act REQUIRE an EA for . .**

Activities involving procurement or use of logging equipment

Activities with the potential to significantly degrade national parks or similar protected areas or introduce exotic plants or animals into such areas



# Once each activity has been screened...

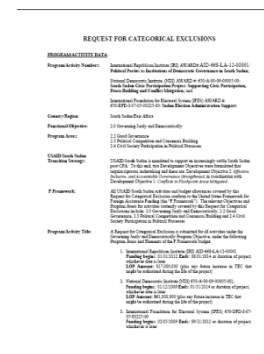
Activity*	Exempt	CatEx	IEE Req'd	EA Req'd
1. Small clinic rehabilitation			X	
2. Borehole Installations			X	
3. Training in patient record-keeping		X		
4. Construct provincial medical waste disposal facility				X

\*Use a table like this. It helps.

# Develop your 22 CFR 216 documentation. . .

. . .as determined by the outcome of your screening process

Overall screening results	22 CFR 216 documentation required
All activities are exempt	Statement of Justification
All activities categorically excluded	<b>Categorical Exclusion Request + FACESHEET</b>
All activities require an IEE	<b>IEE covering all activities + FACESHEET</b>
Some activities are categorically excluded, some require an IEE	An <b>IEE</b> that: <ul style="list-style-type: none"> <li>Covers activities for which an IEE is required</li> <li>AND</li> <li>Justifies the categorical exclusions</li> </ul> + FACESHEET
<b>High-risk activities</b>	<ul style="list-style-type: none"> <li>Initiate scoping and preparation of an EA</li> </ul>



## CATEGORICAL EXCLUSION REQUEST

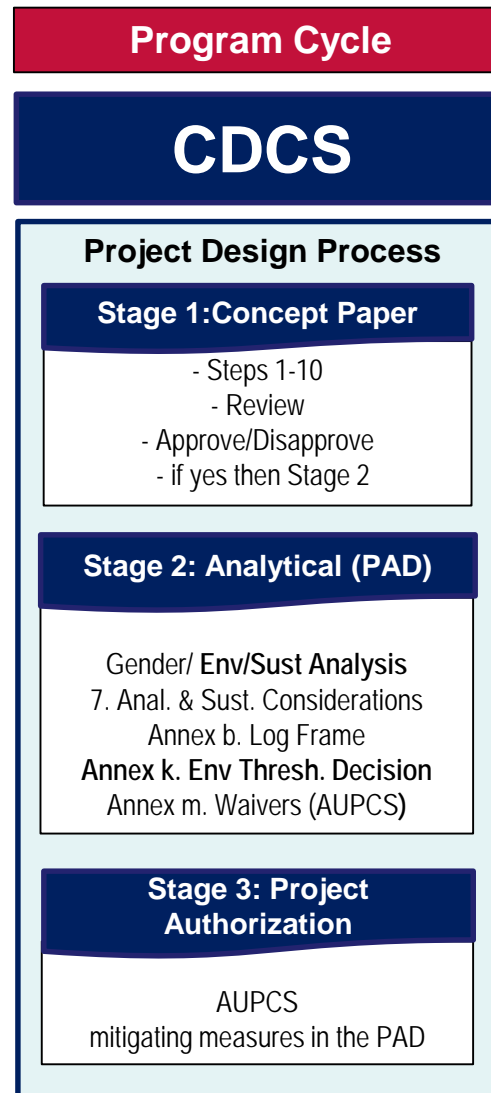
Very simple; 1-2 pages. Describes the activities. Cites 22 CFR 216 to justify the catex.



**Initial Environmental Examination (USAID's preliminary assessment)**

# Timing of 22 CFR 216 documentation. . .

USAID's project design process requires approved Reg. 216 documentation as annex to the Project Appraisal Document



Environmental Planning, FAA 117, 118, 119

**Threshold Decision**

# The IEE: USAID's preliminary assessment

## Basic IEE outline

### 1. Background & Activity Description

- Purpose & Scope of IEE
- Background
- Description of activities

### 2. Country & Environmental information

- Locations affected
- National environmental policies and procedures

### 3. Evaluation of potential environmental impacts

### 4. Recommended threshold decisions and mitigation actions

- Recommended threshold decisions and conditions
- Mitigation, monitoring & evaluation

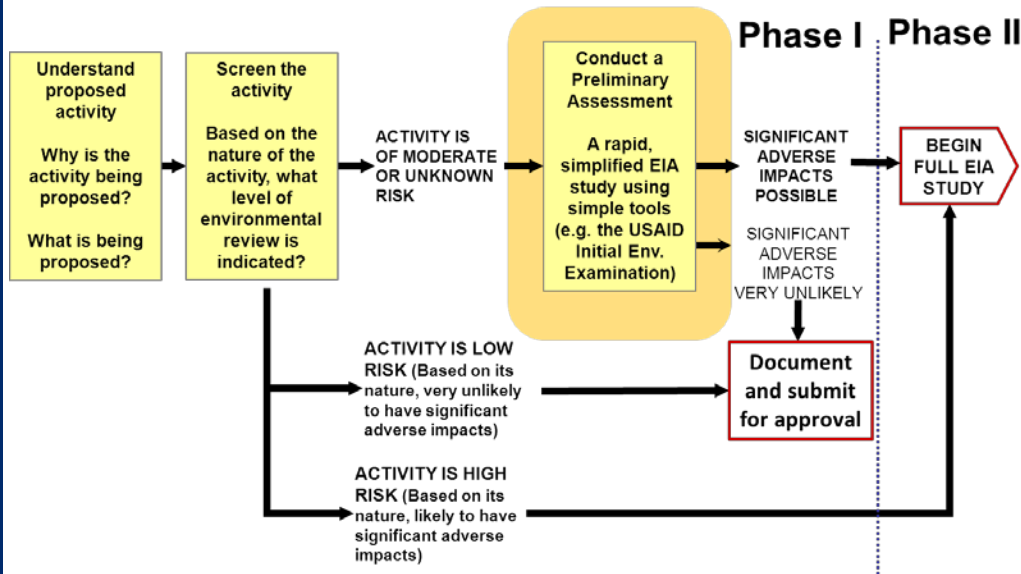


**What does it look like?**

**The IEE is very similar to preliminary assessments required by other donors and governments.**



# Purpose of IEE



## Provides documentation and analysis that:

- Allows the **preparer** to determine whether or not significant adverse impacts are likely
- Allows the **reviewer** to agree or disagree with the preparer's **determinations**
- Sets out mitigation and monitoring for adverse impacts

# What determinations result from an IEE?

For **each** activity addressed, the IEE makes one of 4 recommendations regarding its possible impacts:

<b>If the IEE analysis finds. . .</b>	<b>The IEE recommends a. . .</b>	<b>Implications (if IEE is approved)</b>
No significant adverse environmental impacts	<b>NEGATIVE DETERMINATION</b>	No conditions. Go ahead.
With specified mitigation and monitoring, no significant environmental impacts	<b>NEGATIVE DETERMINATION WITH CONDITIONS</b>	Specified mitigation and monitoring must be implemented
Significant adverse environmental impacts are possible	<b>POSITIVE DETERMINATION</b>	Do full EA or redesign activity. Conditions imposed by the EA must be implemented.
Not enough information to evaluate impacts	<b>DEFERRAL</b>	You cannot implement the activity until the IEE is amended

**PLUS, the IEE will address any CATEGORICAL EXCLUSIONS carried over from the screening process.**

# Reg. 216 documentation & approval

## IMPORTANCE:

No activities may be implemented without APPROVED Reg. 216 environmental documentation in hand.

**APPROVED =  
Mission Director  
(or Washington equivalent) &  
Bureau Environmental Officer  
(BEO) signatures**

BEO concurrence *not* automatic or guaranteed

Dialogue is sometimes required

## Who signs?

### Clearances:

- COR/AOR or Team leader
- Mission Environmental Officer (for Missions)
- Regional Environmental Advisor (depending on mission)
- Mission Director or Washington equivalent\*

### Concurrence

- Bureau Environmental Officer\*

### Approval

- General Counsel (rarely)

\*required by Reg 216

# When the IEE is duly approved. . .

**Recommended determinations & categorical exclusions become THRESHOLD DECISIONS**

**Conditions become REQUIRED elements of project implementation & monitoring** (ADS 204.3.4(b))

**The IEE is posted to USAID's environmental compliance database\***

**Conditions are written into or referenced in solicitation & award documents** (ADS 204.3.4(a)(6))

**IEE conditions provide the bedrock on which life-of-project mitigation and monitoring criteria are established.**

**AORs/CORs oversee implementation** (ADS 204.3.4(b))

\*[www.usaid.gov/our\\_work/environment/compliance/database.html](http://www.usaid.gov/our_work/environment/compliance/database.html)

# What if I need to do an Environmental Assessment\*?

- First step: a formal scoping process (22 CFR 216.3(a)(4))
- Scoping Statement must be approved by Mission Director, Bureau Environmental Officer.
- Informs the SOW for the Environmental Assessment itself.
- EAs are far more detailed than IEEs. They must address alternatives to the proposed activities. Public consultations are required.

*\*If a proposed action may affect the US environment or the global commons, an EIS is required, not an EA. (EIS = Environmental Impact Statement, per the US National Environmental Policy Act (NEPA)). This is RARE. (22 CFR 216.7.)*





# What about host-country EIA procedures?

- Most host countries have domestic EIA requirements;
- USAID projects must also comply with these requirements;
- So, during screening, also screen against host country categories.
- If a host-country preliminary assessment or full EIA is required, the objective is to create **one document that satisfies both systems.**

# Summary

- Reg. 216 establishes the pre-implementation USAID environmental review process
- This reflects the general EIA methodology
- It begins with a systematic screening and decision-making process with more detailed review, if needed
- USAID documentation and approval processes are clear and mandatory
- Reg. 216 documents define project environmental management criteria, most frequently as IEE conditions